

**TRIGON SURVEY & INVESTIGATION LTD**  
26 Clere Gardens  
Basingstoke  
Hants  
RG24 8LZ  
Tel.01256 352794 Mob. 07864 269005  
Email: admin@trigonsurvey.co.uk

Property at [REDACTED], London N2

---

## Precise level monitoring results

V.Snook BSc CEng MICE

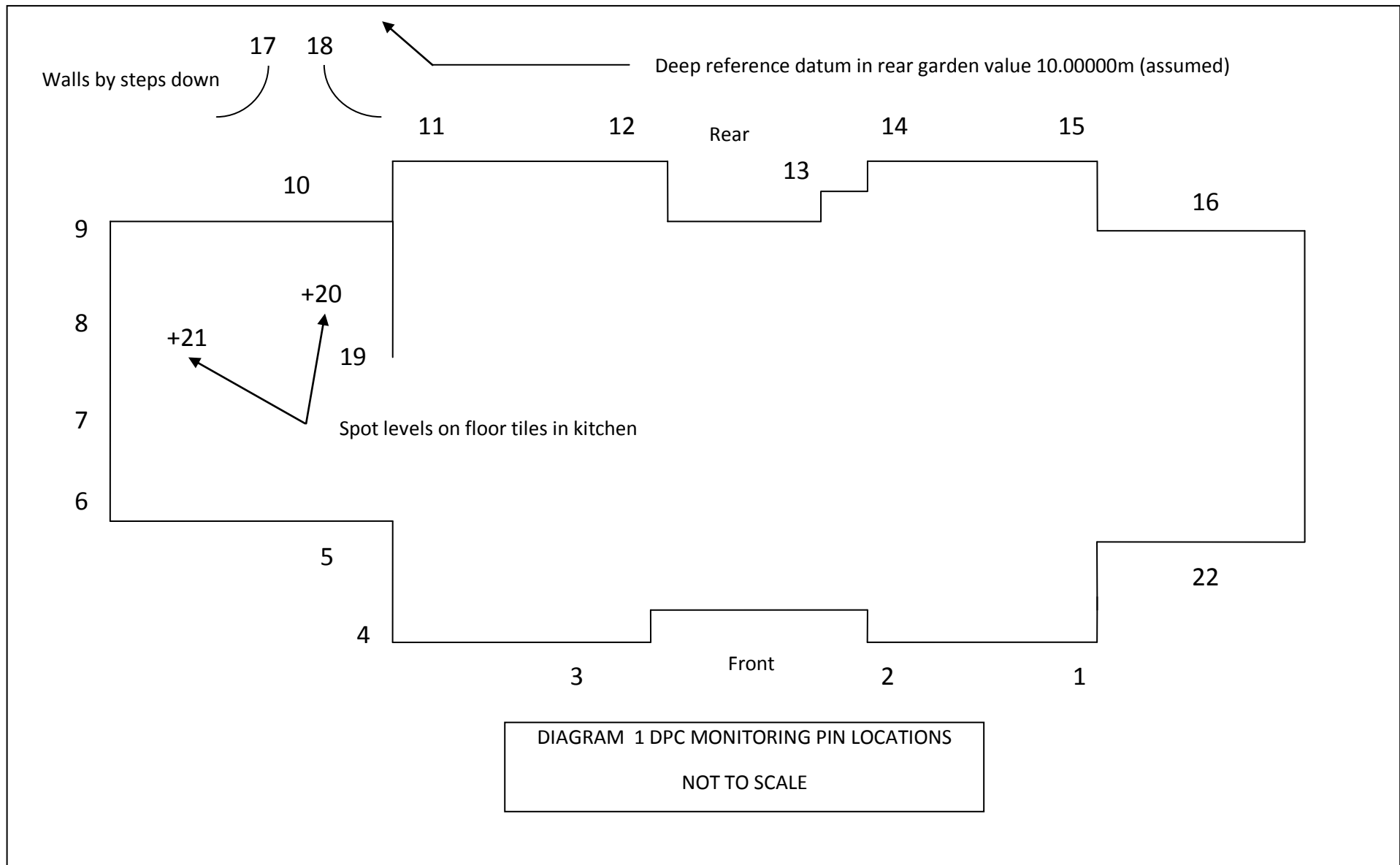
ISSUE NO: 6      DATE: 19/10/12

Level monitoring of DPC pins around the exterior of the property plus 3 internal points obtained using Leica DNA03 precise level (accuracy 0.03mm) and invar staff referenced to deep immovable datum in rear garden

Property at [REDACTED], London N2

Precise level monitoring results 6

Client: [REDACTED] Consultancy



Property at [REDACTED], London N2

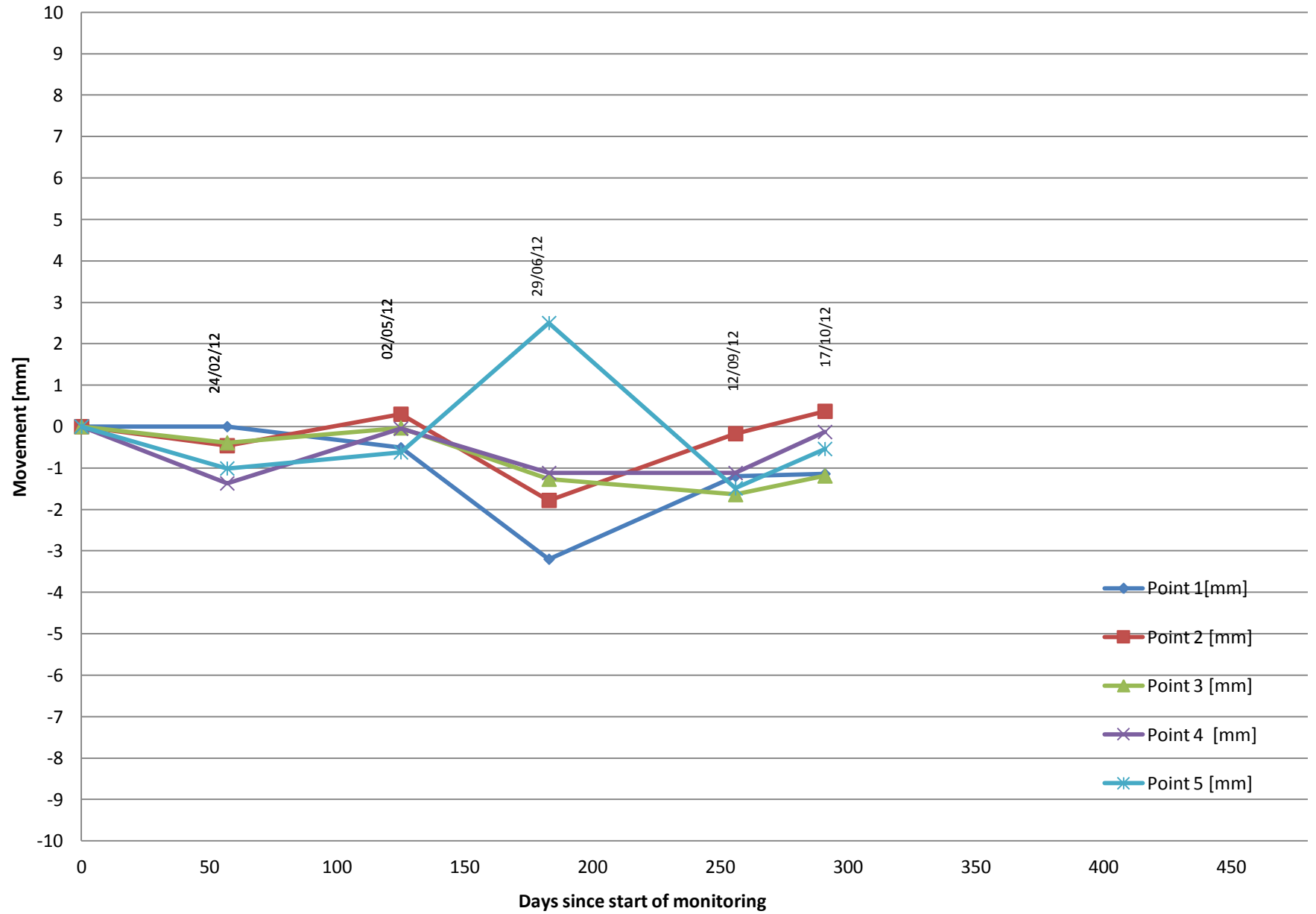
Precise level monitoring results 6

Client: [REDACTED] Consultancy

Point number	Date of initial reading 29.12.11  Initial reading [m]	Date of second reading 24.02.12  Days since initial reading =57 Second reading [m] Pin reset	Movement since start [mm]	Date of third reading 02.05.12  Days since initial reading =125 Third reading [m]	Movement since start [mm]	Date of fourth reading 29.06.12  Days since initial reading = 183 Fourth reading [m]	Movement since start [mm]	Date of fifth reading 12.09.12  Days since initial reading =256 Fifth reading [m]	Movement since start [mm]	Date of sixth reading 17.10.12  Days since initial reading =291 Sixth reading [m]	Movement since start [mm]	Date of seventh reading  Days since initial reading = Seventh reading [m]	Movement since start [mm]
1	10.94194	10.94194	0.00	10.94143	-0.51	10.93874	-3.20	10.94074	-1.20	10.94080	-1.14		
2	10.93414	10.93368	-0.46	10.93444	0.30	10.93236	-1.78	10.93397	-0.17	10.93451	0.37		
3	10.92810	10.92771	-0.39	10.92807	-0.03	10.92683	-1.27	10.92646	-1.64	10.92691	-1.19		
4	10.92833	10.92696	-1.37	10.92828	-0.05	10.92721	-1.12	10.92721	-1.12	10.92820	-0.13		
5	10.92474	10.92373	-1.01	10.92412	-0.62	10.92724	2.50	10.92325	-1.49	10.92420	-0.54		
6	10.90106	10.90205	0.99	10.90423	3.17	10.90458	3.52	10.90690	5.84	10.90731	6.25		
7	10.89853	10.89851	-0.02	10.89954	1.01	10.89895	0.42	10.89906	0.53	10.90089	2.36		
8	10.85549	10.85455	-0.94	10.85652	1.03	10.85374	-1.75	10.85321	-2.28	10.85450	-0.99		
9	10.89507	10.89462	-0.45	10.89495	-0.12	10.89377	-1.30	10.89484	-0.23	10.89553	0.46		
10	11.01860	11.01829	-0.31	11.01967	1.07	11.01947	0.87	11.01950	0.90	11.01924	0.64		
11	11.09472	11.09381	-0.91	11.09542	0.70	11.09462	-0.10	11.09501	0.29	11.09474	0.02		
12	11.10008	11.09833	-1.75	11.10018	0.10	11.10099	0.91	11.10049	0.41	11.10013	0.05		
13	11.07737	11.07718	-0.19	11.07808	0.71	11.07848	1.11	11.07842	1.05	11.07816	0.79		
14	11.09280	11.09215	-0.65	11.09316	0.36	11.09359	0.79	11.09374	0.94	11.09330	0.50		
15	11.10669	11.10453	-2.16	11.10701	0.32	11.10716	0.47	11.10792	1.23	11.10689	0.20		
16	11.08809	11.08735	-0.74	11.08853	0.44	11.08791	-0.18	11.08817	0.08	11.08847	0.38		
17	10.35931	10.35734	-1.97	10.35800	-1.31	10.35663	-2.68	10.35449	-4.82	10.35696	-2.35		
18	10.20587	10.20384	-2.03	10.20489	-0.98	10.20267	-3.20	10.19944	-6.43	10.20094	-4.93		
19	11.06946	11.06827	-1.19	11.06891	-0.55	11.06852	-0.94	11.06907	-0.39	11.06771	-1.75		
20	11.02451	11.02477	0.26	11.02506	0.55	11.02511	0.60	11.02543	0.92	11.02560	1.09		
21	11.01201	11.01220	0.19	11.01174	-0.27	11.01300	0.99	11.01374	1.73	11.01408	2.07		
22	10.84177	10.84047	-1.30	10.84154	-0.23	10.83983	-1.94	10.83990	-1.87	10.84095	-0.82		
Max c .err	0.35mm	0.12mm		0.31mm		0.52mm		0.10mm		0.45mm			

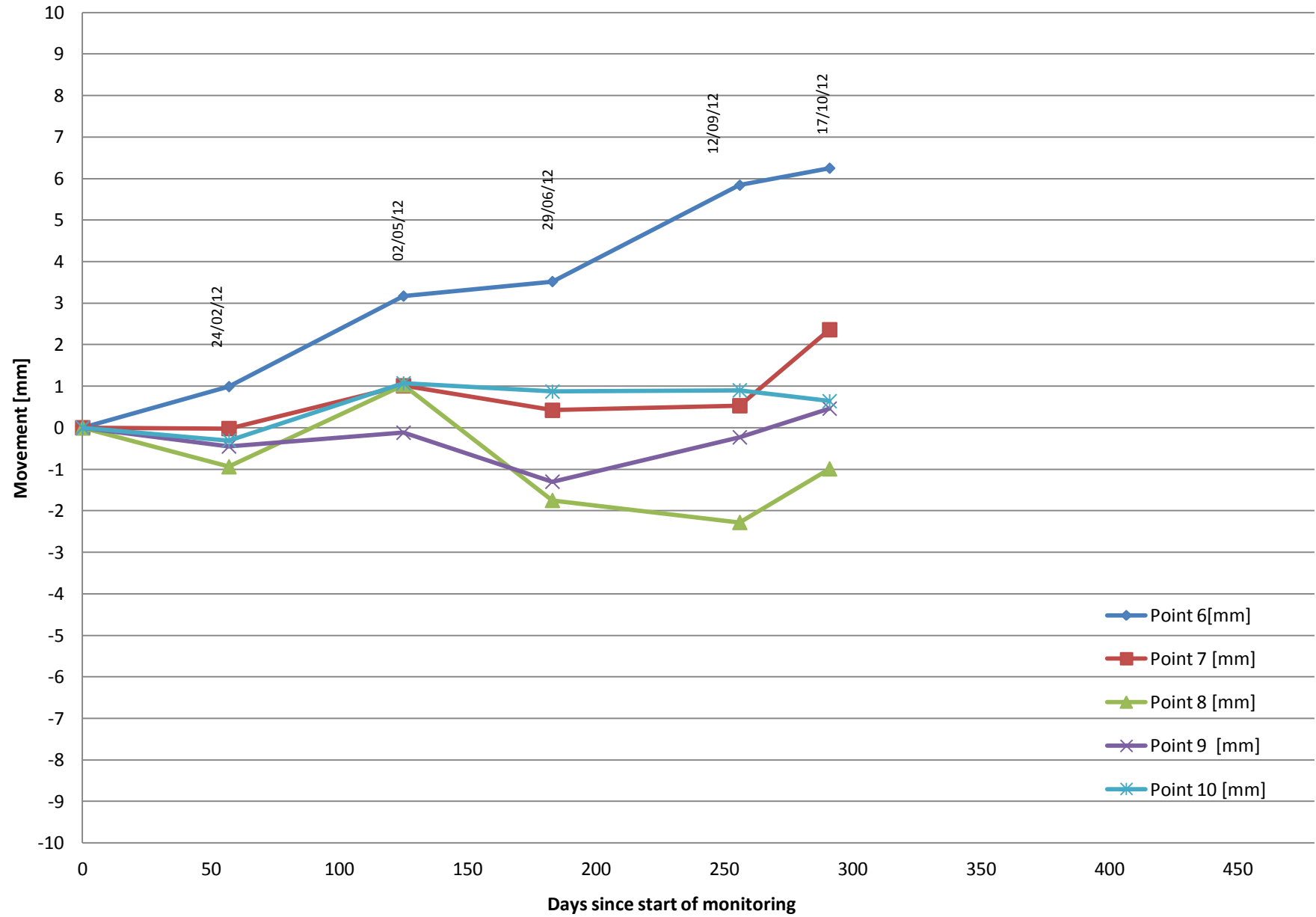
Start  
29/12/11

### DPC Movement - point nos. 1-5



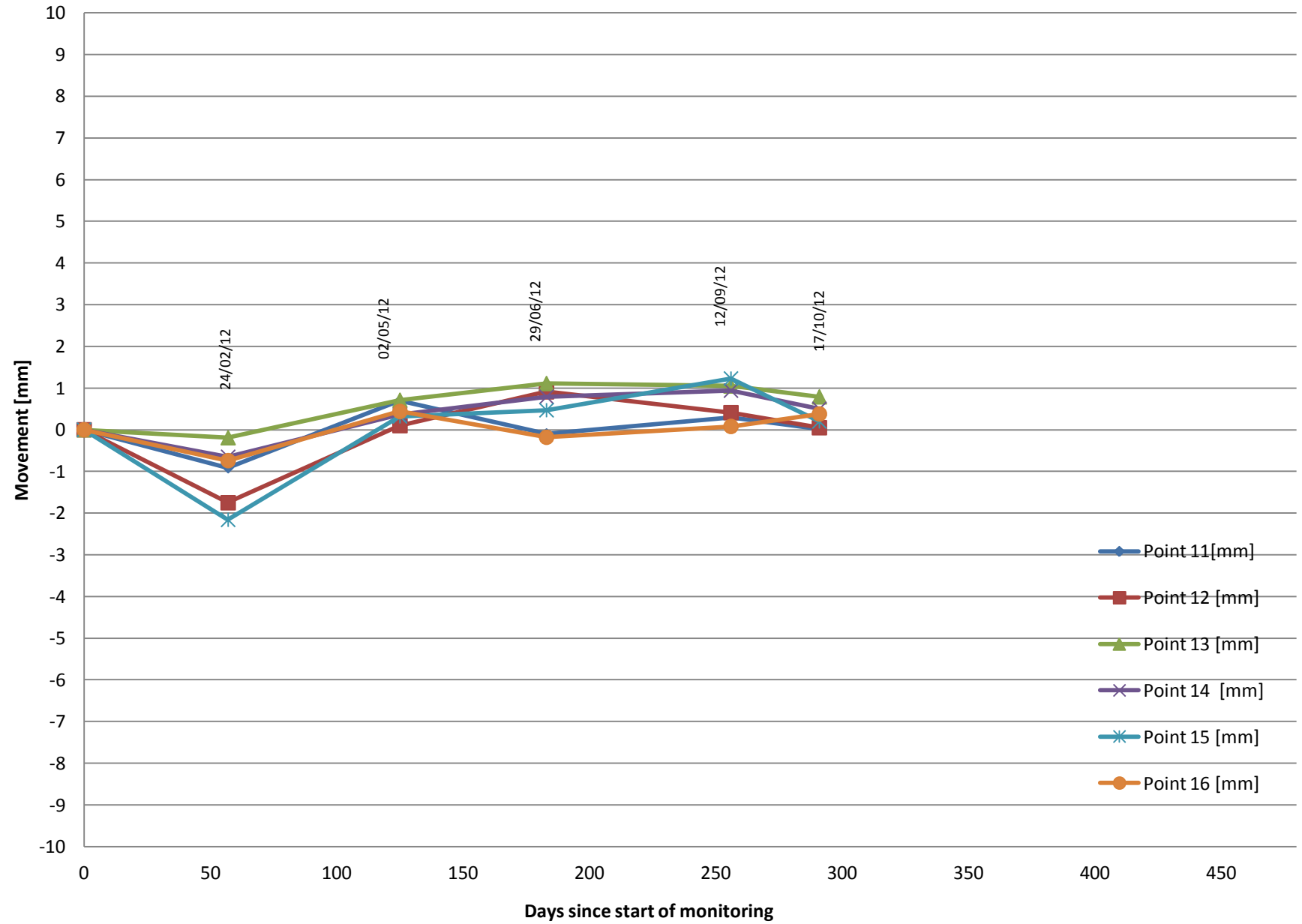
### DPC Movement - point nos. 6-10

Start  
29/12/11



### DPC Movement - point nos. 11-16

Start  
29/12/11



### DPC Movement - point nos. 17-22

Start  
29/12/11

